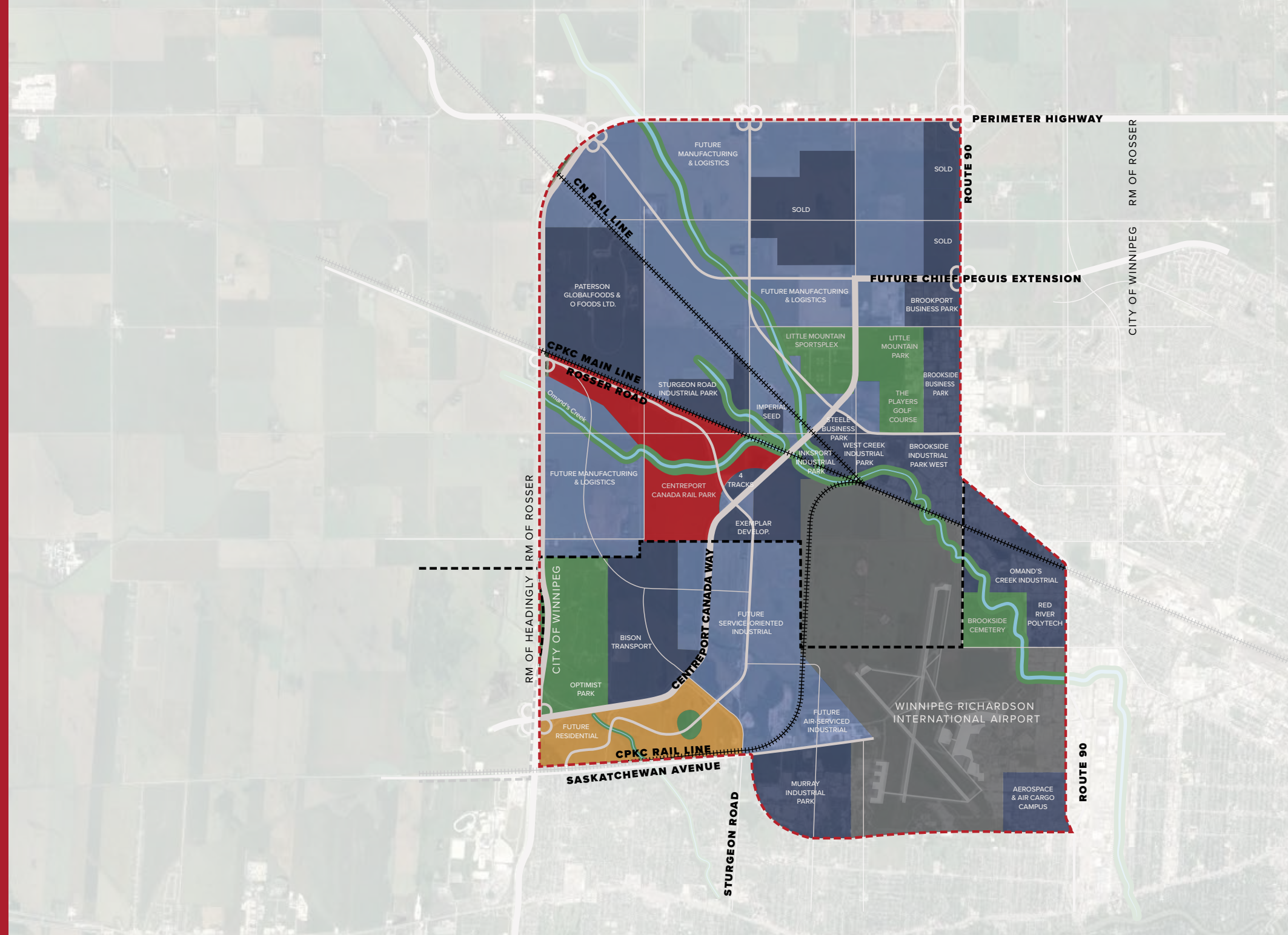


# OPPORTUNITIES YOU CAN EXPAND ON

## CENTREPORT CANADA

Planned as a complete community, CentrePort Canada offers much more than access to global gateways:

- 20,000 acres of prime, affordable industrial land
- 665 acre rail park
- Foreign Trade Zone advantages
- Dedicated planning resource to expedite the planning and land development approval process
- Major industry leaders located on site
- Affordable skilled labour
- Renewable, reliable, low cost energy
- 500 acre future residential community
- Situated one hour north of the Canada-US border



### EXISTING & PLANNED TRANSPORTATION

- Highway / Expressway
- Arterial
- Collector
- ||||| Rail Line

### BOUNDARIES & NATURAL FEATURES

- Municipal Boundary
- - - CentrePort Boundary
- Creek

### EXISTING & PLANNED LAND USE

- CentrePort Canada Rail Park
- Industrial Land - Developed / Planned
- Industrial Land - Future Development
- Winnipeg Richardson International Airport
- Residential Land
- Parks & Open Space